

How to use a one-touch stopper

How to open a one-touch stopper

Hold both edges of stopper and push them up lightly from the bottom to the top by index fingers. Then, curved surface of stopper turns over and the stopper snaps open



Stopper closed



Stopper open

Key points to attach stoppers

(The photos are top piece examples)



1. Make sure all stoppers are open before attaching.

2. Decide the position to attach a stopper and set comb part of it up at a right angle against your head and insert it into your own hair with setting it down gently along with your skin of head.



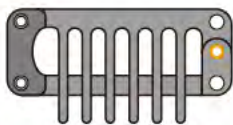
3. Push both edges of the stoppers down until securely snapping shut. In principle, snap stoppers shut in turns of front, both side and rear. The turn is opposite when snapping open.

! Please be careful not to hurt the scalp on your head.

! The stopper has secure fixing function, however please do not use in same position for a long period or insert comb part strongly into your hair.

! It is rare but stopper may get broken if you open or shut it by pushing strongly. If you continue to use the broken stopper, it may damage your scalp or hair. Discontinue use of any broken stoppers.

We accept requests of stopper's position change or exchange it with a new one. Please ask your nearest "Fontaine" store for details.



One-touch stoppers are adopted for our all top pieces and some wigs.



Spare stopper

A spare stopper is sold separately. Other stoppers such as "metallic allergy-conscious rubber type" are also available. Please ask your nearest "Fontaine" store for details.

Before wearing a top piece or a half wig



Brush your hair before you wear a top piece or a half wig. When brushing your hair, let your fringe down so that your own hair will blend to the top piece.

*** Please use your regular hair brush for your own hair.**



Brush the top piece or the half wig to blend well into your hair.

*** We recommend our anti-static "AD&F Cushion Metallic Brush" or "AD&F Skelton Brush" exclusively for brushing a wig.**

How to wear a top piece

1 Confirm front and rear side



Confirm front and rear side of a top piece before you wear it. The side with name tag (see page 18) is rear side. At this time, make sure all one-touch stoppers are open.

2 Place in desired



Place in the section you 'd like more volume. A guide of the position is 1-3 cm back from your hairline. Set comb part of a stopper up at a right angle against your head and put it into your own hair while setting it down gently alongside of your scalp.

3 Snap front and both sides' stoppers shut



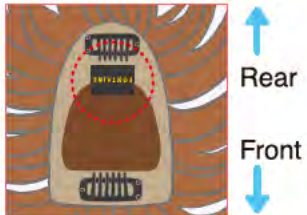
While holding the top piece lightly in your hands, snap stoppers shut one by one from front or both sides.

*** In some cases, center of top piece floats if you snap both sides shut simultaneously.**

4 Then snap the rear stopper shut



With letting it be along with round shape of head, **snap the rear stopper shut last of all.**

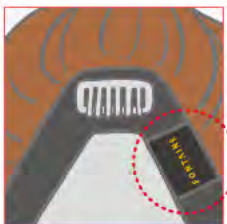


Some top pieces have two stoppers.



Insert into your own hair while setting it down gently alongside your scalp.

! Please be careful not to hurt the scalp on your head.



In some cases, the name tag is attached at an angle.



"Name tag" is a cloth tag with brand name and model No.

See page 18

Basic brushing of a top piece

Blend a top piece into your hair



While holding center of top piece lightly in your hand, brush to blend into your hair.

* **The goal is to get the border between the top piece and your hair blended well.**

Styling



While holding center of the top piece lightly in your fingertip, brush tip of hair lightly along with hair flow. Turn brush around the section you'd like more volume as you scoop up your hair from base.

If you put your fringe up



If you put your fringe up, brush not to separate the top piece from your hair.

When styling, please do not brush like slicking down your hair too much.

We recommend our anti-static "AD&F Cushion Metallic Brush" or "AD&F Skelton Brush" exclusively for brushing a wig.

See page 25 & 26



How to remove a top piece

1 Open stoppers

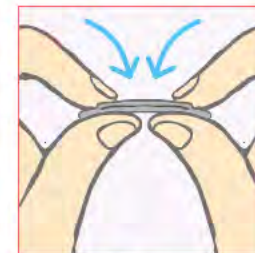


To snap stopper open, with holding center of stopper with both your thumbs and index fingers, push it down lightly with index fingers. First open the rear stopper. Then open the front stopper(s).



* Page 3 is an introduction on how to use one-touch stoppers in detail.

See page 3



Closed



Open

2 Detach stoppers



Snap all stoppers open. With turning front stopper up, move it forward to avoid pulling your hair. Then displace it backward slowly.

* **Detach it from your hair as pulling comb part of stopper forward.**



! **When detaching stoppers, please be careful that your hair can get entangled if you bring up the top piece overhead or backward suddenly.**

How to wear a half wig

1 Prepare for wearing



Confirm front and rear side and hold both sides of neckline part (rear) with both hands. Make sure all stoppers are open.

2 Decide position to wear



Wear it in about 1cm back from hairline. Make sure both stoppers are in symmetric position.

3 Snap stoppers shut.



First snap front or both side stoppers shut one by one and then snap the rear stopper shut.

* At this time, please be careful not to pull a cap down too strongly.

4 Blend the half wig into your hair



With an exclusive brush, brush it to blend into your hair. Brush the tips of only the part that blends into your hair.

* If you let fringe of the wig down, please check the position of wear as the look may be much different depending on its length.

How to remove a half wig

1 Detach stoppers



First detach the rear stopper. Then detach both sides' stoppers one by one.

2 Let both sides raise from rear



Put your thumbs into neckline part, pull it up and let rear raise.

3 Snap front stopper open



Put your thumbs into front part and pinch the front stopper with your thumbs and index fingers. Then snap it open with your index fingers.

4 Remove a half wig



Detach comb parts of stoppers from your hair and remove the wig by flipping it.

Before wearing a full wig

● How to put your hair together

If you use a net

If you have long, medium hair, or even short hair with grey or high volume hair, we recommend our "AD&F Wig Undernet" which is easy to put your hair together and hard to break it up.



Put a part with thick rubber of the net downward and a part with seams backward and let the net into your neck. Then put neckline hair over the net. Bring up the net just like wearing a hair band.



While being careful not to pull the net backward too much, clip key positions with hair pins. Stretch the net lightly, put your hair and the net together like folding both, and clip it with pins.



Arrange your hair as even, leave your ears out from the net and displace it until your hairline comes out to 1-2 cm.

* **Set hairpin ends in hair.**



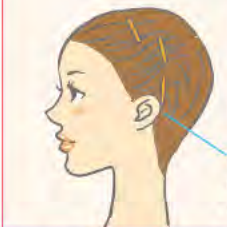
How to put your hair together with the net, its position and how to clip your hair with pins may be different by style. Please consult the place of purchase.

Put your hair together evenly to avoid lumps at the top and at nape.

If you do not use a net

If you don't use a net, for example, because you don't like the pressure of a net, put your hair together by commercial hair pins.

Short hair direction



* **If you want to keep your fringe out, let it down without pinning.**

Gather the sides of your hair and clip it in the back of your ears.

Brush all of your hair as letting your hair flow backward and pin the sides and front as necessary.

Long or medium hair direction



Put your hair together at center of hair whorl and pin it.

Pull your front and side hair backward, put it together, make it round as even and pin those.

● Wig preparation

1 Brush a full wig



Arrange style by brushing a wig overall lightly before you wear it.

* **We recommend our anti-static "AD&F Cushion Metallic Brush".**

See page 25

2 Open stoppers



Keep all one-touch stoppers open.

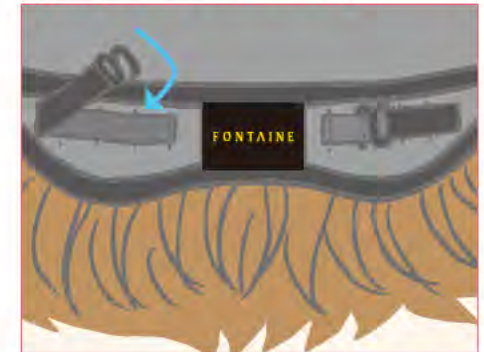
3 Confirm front and rear side



Confirm front and rear side of the wig. The part with name tag inside of net is rear side. (=neckline) "Name tag" is a cloth tag with brand name and model No. See page 18 for details.

See page 18

4 Adjust the size of a wig



Adjust the size to fit your head by hanging S-hook in the adjuster belt.

* **You can adjust it to your head size easily with the adjuster belt. Some wigs do not have stoppers and/or an adjuster belt. Please confirm with your nearest "Fontaine" store.**

How to wear a full wig

Short wig's case

1 Confirm front and rear side



Hold rear (neckline) part of the wig with both hands.

2 Put the wig from your forehead



Put it once deeply so as to hanging front part of wig on your forehead.

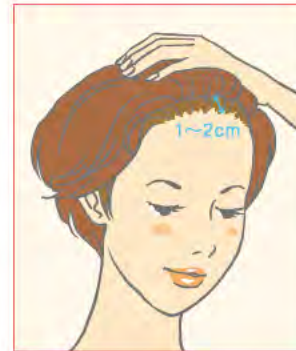
3 Put rear part of it



Then, displace it backward.

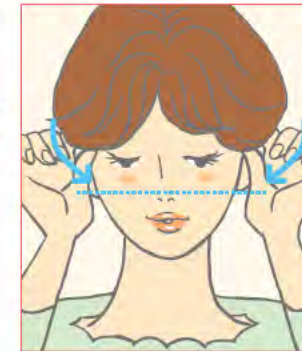
Common in short and long wigs

4 Confirm correct position to wear



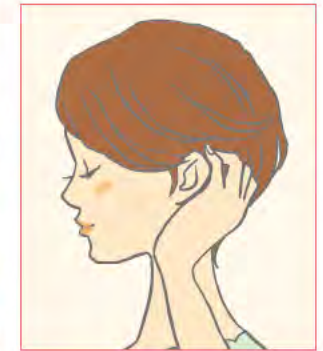
● Front

Generally, the position is 1-2 cm rear from your hairline. (2cm back if you use your own fringe.)



● Both sides

Confirm that both sides' position is same and wire parts in front of ears are not rolled outside.



● Around ears

Make sure wig base is not covering your ears.

● Neckline

Please do not pull neckline down too much. Make sure the position is bilaterally symmetric.

Long wig's case

1 Bring the wig to the back of your head



Hold both side parts which touch your ears and bring it to back of your head.

2 Put the wig from your forehead



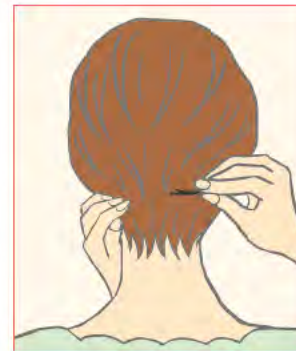
Put it once deeply so as to hanging front part of wig on your forehead.

3 Put rear part of it



Then, displace it backward.

5 Pin it



If wig position is correct, stabilize the wig by pinning it with each 1 piece above each ear and with 1 or 2 pieces at neckline as necessary. In case of a wig with stoppers, snap stoppers shut and pin it as necessary.

* When pinning, make sure pins are not visible.

The important point is to get accustomed to attaching and placing the wig on proper position to fit comfortably.



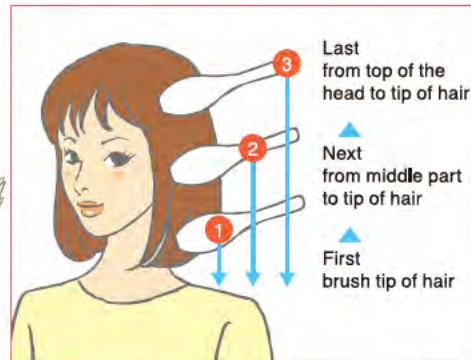
Basic brushing of a full wig

To the beginning

In case of a relatively long-hair wig, basically brush from tip of hair to top of the head in a step-by-step manner. We recommend our anti-static "AD&F Cushion Metallic Brush" for brushing. For brushing "Readymade fluffy" wig made with "Cyber Hair", we recommend our "AD&F Skelton Brush".



See page 25 & 26



Straight hair's case



Brush from tip of hair and gradually raise starting position to brush from tip of hair to top of the head.

Natural hair's case



Set hair style by brushing as let the brush half-turned in the middle of hair.

Curly hair's case



Brush from base of hair and curl it with utilizing the feeling of hair volume.

Wavy hair's case



Brush hair lightly by following hair flow and set it by hand.

How to remove a full wig

1 Take out hairpins and detach stoppers



If wig is fixed by pins, take those out. In case of a wig with a rear stopper, detach it first.

* Page 3 is an introduction on how to use one-touch stoppers in detail.

See page 3

2 Let rear part of a wig raise



Put your thumbs into wig neckline and pull them up, then let rear part of a wig raise.

! In case of a wig with stoppers, please avoid removing the wig suddenly from front part as it may cause strain on your scalp and hair.

3 Snap a front stopper open



For wig with a stopper in front, put thumbs into front part and snap the stopper open by index fingers with supporting it by thumbs.

4 Remove the wig



Detach comb part of stoppers and remove the wig by flipping it.

How to shampoo a wig (by hair material)

In case of everyday use, we recommend to shampoo and rinse your wig from once a week to every 10 days.
Page 25~27 is an introduction of exclusive wig care items.

Synthetic Fiber without "Cyber Hair"

※ Use Water Only

● Use AD&F WIG Shampoo & AD&F WIG Treatment

Standard usage quantity: Approx. 15mℓ of both shampoo and treatment against 1.5~2.0ℓ of water. (15mℓ is approx. a tablespoon quantity, and 1.5~2.0ℓ is approx. a washbowl quantity.)



1 Clean off dust, dirt and tangles before shampooing. Make sure all stoppers are closed. Put exclusive shampoo into water and foam it. Then, wash it by pressing lightly by hand.

※ If it is very dirty, wash it 2 times.



2 After press-washing, change water and rinse it with the water. After rinsing thoroughly, soak in water with the melted exclusive treatment for 2~3 minutes. After that, lightly rinse with water again.

※ Please do not wash it by hand or by brush because it may cause hair tangles.



3 Dry it by holding lightly with a dry towel, and let it air dry indoors. Especially in case of a wig with artificial skin, please dry it very carefully. If you leave it wet, artificial skin part may become damaged.

※ Please avoid blow dry or direct sunlight.



4 When dry, please set hair flow from tip of hair.

※ Brushing it as it is still wet may cause rolling out curl.

Synthetic Fiber with "Cyber Hair"

※ Use Water or 30~40°C lukewarm water.

● Use AD&F WIG Shampoo & Treatment

Standard usage quantity: 3~4 times push against 1.5~2.0ℓ water. (1.5~2.0ℓ is approx. a washbowl quantity.)



1 Clean off dusts and tangles before shampooing. Make sure all stoppers are closed. Put exclusive shampoo into lukewarm water and foam it, soak for 2~3 minutes. Then, wash by pressing and by shaking it lightly by fingertips.

※ If it is very dirty, wash it 2 times.



2 After press-washing, dry it lightly and soak it in lukewarm water and repeat 3 or 4 times. Then rinse it well.

※ Please do not wash it by hand because it may cause hair tangles.



3 Dry it lightly and wrap it with a dry towel. Then dry it well by patting it. Especially for a wig with artificial skin, please dry it very carefully. If you leave it wet, artificial skin part may become damaged.

※ Please do not scrub hair with a towel.



4 Spray a cure-coat all over onto its surface and brush. Arrange hair style and hair flow with a brush or fingertips and let it air dry or blow dry.

※ If using a hair dryer, please keep it more than 10cm away from it and dry it lightly just as letting water splash.

How to shampoo a wig (by hair material)

In case of everyday use, we recommend to shampoo and rinse your wig from once a week to every 10 days. Page 25~27 is an introduction of exclusive wig care items.

Mixed hair (Mixture of synthetic fiber and human hair)

※ Use Water Only

● Use AD&F WIG Shampoo & AD&F WIG Treatment

Standard usage quantity: Approx. 15ml of both shampoo and treatment against 1.5~2.0ℓ of water. (15ml is approx. a tablespoon quantity, and 1.5~2.0ℓ is approx. a washbowl quantity.)



Clean off dust, dirt and tangles by brushing before shampooing. Make sure all stoppers are closed. Put exclusive shampoo into water and foam it. Then, wash it by brushing from tip of hair with a large-bristle brush or fingertips.

※ Please do not soak it in shampoo or treatment for a long period, or wash it by hand.



Rinse it by brushing from tip of hair as well as shampoo with pooled water or running water. Next melt exclusive treatment into water and soak for 2~3 minutes. Then rinse it lightly with water.



After rinsing, dry it by holding lightly with a dry towel. Especially in case of a wig with artificial skin, please dry it very carefully. If you leave it wet, artificial skin part may become damaged.

※ Please avoid blow-dry or direct sunlight.



Get curl back by shaking the wig well and set hair style in **half-dry condition**. Then, let it air dry indoors.

Human hair

※ Use Water or 30~40°C lukewarm water

● Use AD&F WIG Shampoo & AD&F WIG Treatment

Standard usage quantity: Approx. 15ml of both shampoo and treatment against 1.5~2.0ℓ of water. (15ml is approx. a tablespoon quantity, and 1.5~2.0ℓ is approx. a washbowl quantity.)



Clean off dust, dirt and tangles by brushing before shampooing. Make sure all stoppers are closed. Put exclusive shampoo into water or 30~40°C lukewarm water and foam it. Then hold forehead part of the wig and wash it by brushing from tip of hair to the middle and to top of the head.



Clean As well as shampooing rinse it by brushing from tip of hair with **running water**. Soak 2 or 3 times in water with melted hair treatment, blanket it all over with the wig by brush and rinse it by brushing again.

※ Please do not soak it in water for a long period as the wig may become entangled.



Dry it by holding lightly with a dry towel and set hair style in half-dry condition. Then, let it air dry. Especially in case of a wig with artificial skin, please dry it very carefully. If you leave it wet, artificial skin part may become damaged.



If you set the wig by yourself, please use a hair dryer or a hair curler.

※ Our exclusive set stand is convenient for setting.